



Flower Lane, Mill Hill, NW7

£625,000

A beautifully presented two-bedroom, two-bathroom apartment extending to approximately 932 sq ft, offering bright, contemporary accommodation within this highly sought-after modern development.

Positioned on the third floor, the property boasts a superb luxury open-plan living space incorporating a sleek, modern kitchen, creating a stylish and highly functional environment ideal for both everyday living and entertaining. The principal bedroom benefits from fitted storage, a well-appointed en-suite bathroom, and direct access to a private balcony. A generous second bedroom and a contemporary family bathroom complete the accommodation.

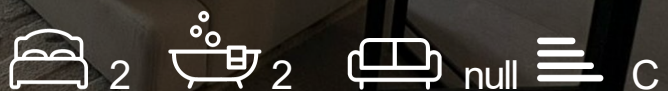
Residents of Titan Court enjoy a range of premium amenities, including concierge service, underground parking, and access to a beautifully designed communal roof terrace.

Ideally located for Mill Hill's excellent shopping facilities, restaurants, green spaces, and transport links, this apartment represents an outstanding opportunity for both owner-occupiers and investors alike.

- Two double bedroom apartment
- Two modern bathrooms
- Spacious open-plan living area
- Private balcony access
- Sleek open-plan kitchen
- Concierge service
- Communal roof terrace
- Underground parking included

Viewing

Please contact our Mill Hill Office on 02089590011 if you wish to arrange a viewing appointment for this property or require further information.



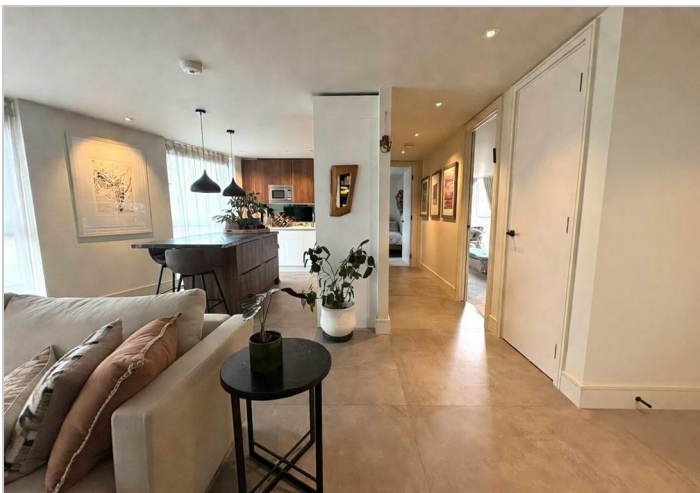
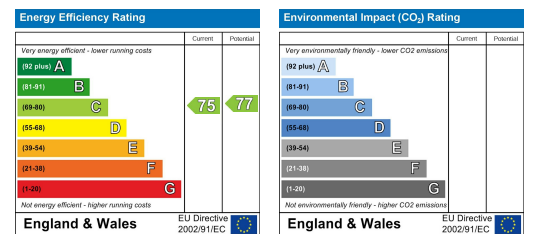
Floor Plan



Area Map



Energy Efficiency Graph



These particulars, whilst believed to be accurate are set out as a general outline only for guidance and do not constitute any part of an offer or contract. Intending purchasers should not rely on them as statements of representation of fact, but must satisfy themselves by inspection or otherwise as to their accuracy. No person in this firm's employment has the authority to make or give any representation or warranty in respect of the property.